

Data Sheet

Product ID ALV110L2P1C9

PRODUCT NAME

Low Temperature Direct Acting Solenoid Valve of Flameproof

DESCRIPTION OF THE PRODUCT

ALV110L1P1C9 series direct action flameproof solenoid valve can be used in hazardous area (Class I Zone 1) which has low starting air pressure, sensitive action, low power consumption and low temperature working performance. this kind of direct action valve can not only directly control the pneumatic actuator, but also can be directly installed and connected with a variety of pneumatic valves to form a high-performance pilot solenoid valve.



APPROVED BY



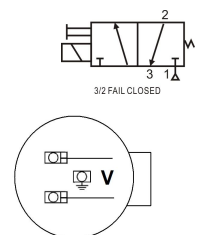
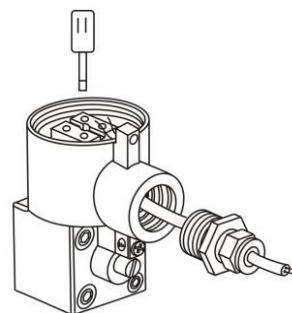
Coil Specification (C9)

Coil Enclosure	Die-casting aluminum + Epoxy coated
Wiring Connector	M20-1.5 or 1/2"NPT, Terminal Strip
Operating Voltage	24VDC≤7W, 110/220VDC≤6.5W 24/110/220VAC≤ 7.5VA(50/60Hz)
Voltage Tolerance	±10%
Insulation Protection	H class
Insulated voltage	1000V
Duty factor	100% ED
Area Classification	Ex db IIC T6 Gb, Ex tb IIIC T85°C Db, Class I, Division 1, Groups A, B, C, D T6

BODY TECHNICAL DATA

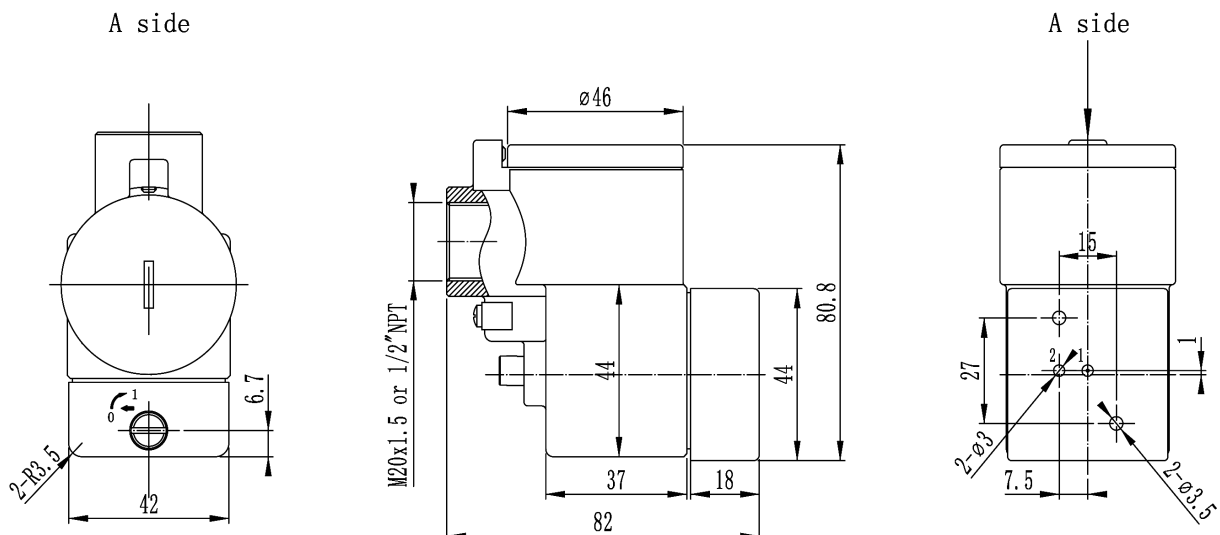
Body	Extruded aluminum + anodized coated
Seal	Buna N
Fasteners	Stainless steel
Function	3/2 direct acting, spring return, NC,
Flow rate(Orifice)	78L/M, CV=0.08 (1.3mm)
Air Ports	ø3mm
Manual Override	on the body
Mounting	in-line interface
Working pressure	0~8 bar
Working Medium	less than 40µm filtered and dried air
Working Temp.	-53°C~60°C
Environment.	Indoor and Outdoor
Weather Proof	IP67

Wiring Diagram and Operating



Note: The Exd Cable Gland is not included. Enquiry please contact with us.

DIMENSION AND DRAWING



*For continuous improvement of the product, we reserve the right to alter the dimensions, technical data in this data sheet.

ALLIED AUTOMATION

www.allied-actuator.com

info@allied-actuator.com

Data Sheet

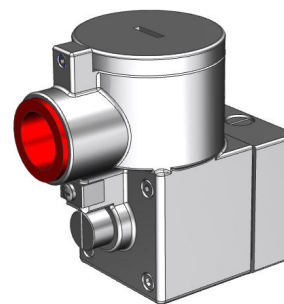
Product ID ALV210L2P1C10

PRODUCT NAME

Low Temperature Direct Acting Solenoid Valve of Flameproof

DESCRIPTION OF THE PRODUCT

ALV210L2P1C10 series direct action flameproof solenoid valve can be used in hazardous area (Class I Zone 1) which has low starting air pressure, sensitive action, low power consumption and low temperature working performance. this kind of direct action valve can not only directly control the pneumatic actuator, but also can be directly installed and connected with a variety of pneumatic valves to form a high-performance pilot solenoid valve.



APPROVED BY



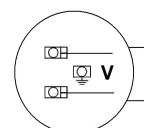
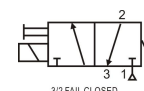
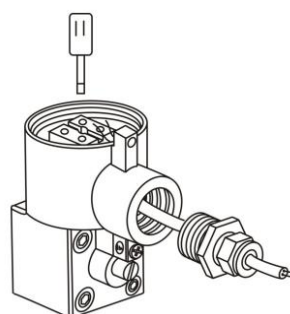
Coil Specification (C10)

Coil Enclosure	Stainless steel 316
Wiring Connector	M20-1.5 or 1/2"NPT, Terminal Strip
Operating Voltage	24VDC≤7W, 110/220VDC≤6.5W 24/110/220VAC≤ 7.5VA(50/60Hz)
Voltage Tolerance	±10%
Insulation Protection	H class
Insulated voltage	1000V
Duty factor	100% ED
Area Classification	Ex db IIC T6 Gb, Ex tb IIIC T85°C Db, Class I, Division 1, Groups A, B, C, D T6

BODY TECHNICAL DATA

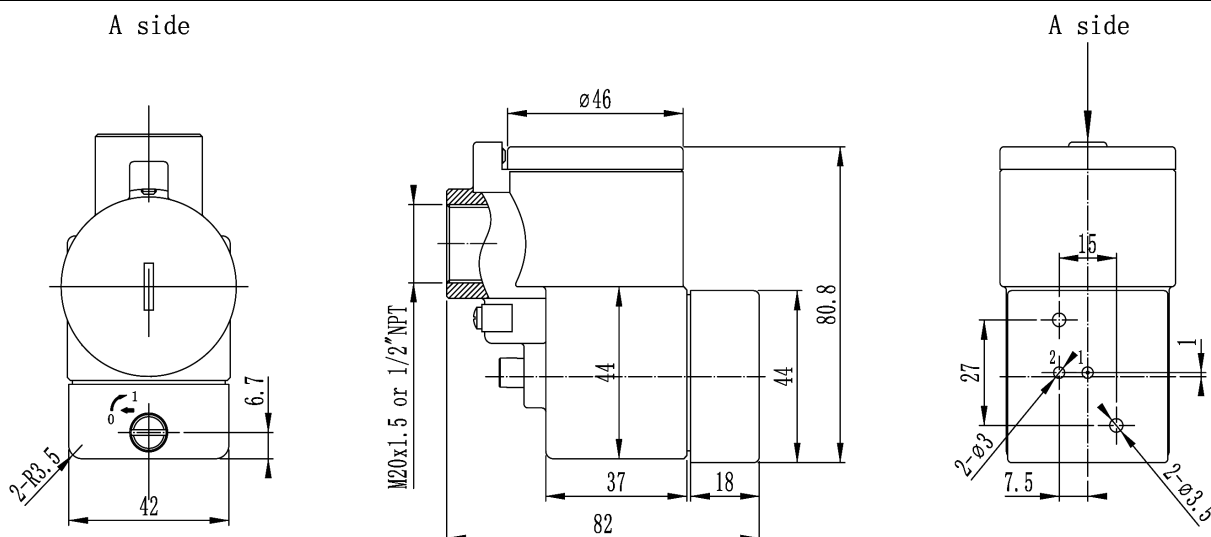
Body	Stainless steel 316
Seal	Buna N
Fasteners	Stainless steel
Function	3/2 direct acting, spring return, NC,
Flow rate(Orifice)	78L/M, CV=0.08 (1.3mm)
Air Ports	ø3mm
Manual Override	on the body
Mounting	in-line interface
Working pressure	0~8 bar
Working Medium	less than 40µm filtered and dried air
Working Temp.	-53°C~60°C
Environment.	Indoor and Outdoor
Weather Proof	IP67

Wiring Diagram and Operating



Note: The Exd Cable Gland is not included. Enquiry please contact with us.

DIMENSION AND DRAWING



*For continuous improvement of the product, we reserve the right to alter the dimensions, technical data in this data sheet.

ALLIED AUTOMATION

www.allied-actuator.com

info@allied-actuator.com